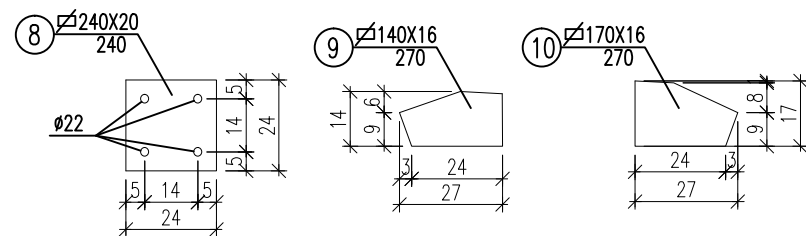


Technical drawing of a roof truss system (Dachstuhl) showing a side elevation. The drawing includes various structural components and dimensions:

- Roof Structure:** The roof is supported by a series of vertical posts (BL134X66X5) and horizontal beams (Z150X68/60X2, L140X70X4). The roof pitch is indicated by a triangle with a vertical side of 12 and a horizontal side of 1.
- Truss Members:** The truss system consists of top chords (RK120X120X6, L=1317), bottom chords (RK120X120X6, L=8115), and diagonal members (RK40X40X3, L=380; RK60X60X5, L=1167).
- Dimensions:** The overall length of the truss is 811.5. The spacing between the vertical posts is 120.2. The height of the truss is 12.2. The width of the roof is 128.4.
- Labels:** The drawing includes labels for various components, such as BL134X66X5, Z150X68/60X2, L140X70X4, RK120X120X6, L=1317, RK40X40X3, L=380, RK60X60X5, L=1167, and RK120X120X6, L=8115.
- Notes:** The drawing includes a note "FIS A x4" at the bottom right, indicating that the drawing is a section of a larger assembly.



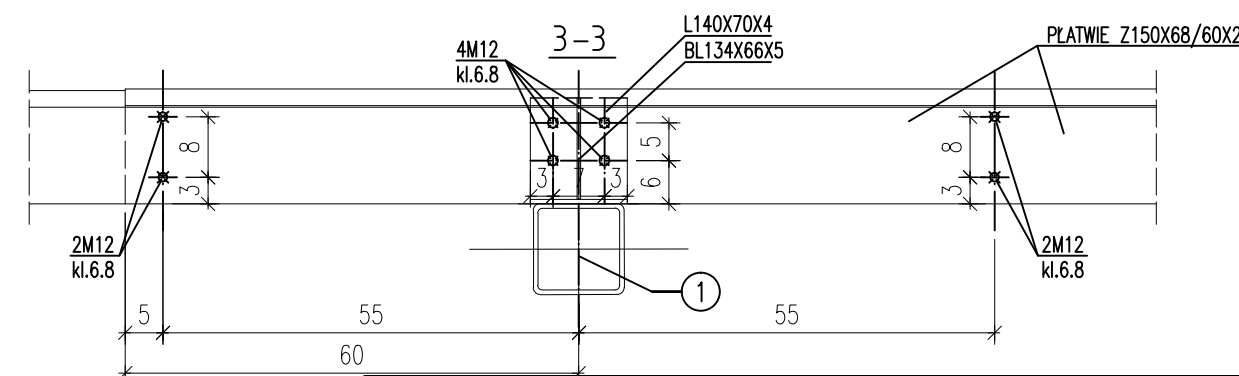
NR	IŁOŚĆ [szt.]	PRZEDMIOT	DŁUGOŚĆ [mm]	MASA 1[kg/m]	MASA 1[kg]	MASA CAŁK. [kg]
1.	2.	3.	4.	5.	6.	7.
1	1	RK120X120X6	10183	24,90	253,56	253,56
2	1	RK120X120X6	8115	24,90	202,06	202,06
3	1	RK120X120X6	1317	24,90	32,79	32,79
4	1	RK120X120X6	1317	24,90	32,79	32,79
5	4	RK60X60X5	1167	9,87	11,52	46,08
6	2	RK40X40X3	1117	3,41	3,81	7,62
7	7	RK40X40X3	380	3,41	1,30	9,10
8	2	BL240X20	240	—	9,04	18,08
9	1	BL140X16	270	—	4,75	4,75
10	1	BL170X16	270	—	5,77	5,77
RAZEM :						612,60
DODATEK 2%						12,25
SUMA :						624,85
ŁĄCZNIE DLA 2 ELEMENTÓW :						1249,70

1. Jeśli nie opisano spoiny na rysunku, elementy należy spawać na spoiny pachwinowe o gr. spoiny takiej jak grubość cieńszej ścianki spawanego elementu (profile zamknięte) lub 0,7 grubość cieńszej ścianki spawanego elementu (profile walcowane).

Technical drawings of two types of mounting brackets, labeled 1-1 and 2-2.

1-1: Shows a bracket with a square mounting plate (1) and a central vertical rod (9). The bracket is secured by two screws (8). Dimensions are indicated: 5, 14, 24, and 5. The screws are labeled M20-k1.8.8 FIS A x4.

2-2: Shows a similar bracket design with a square mounting plate (1) and a central vertical rod (9). The bracket is secured by two screws (8). Dimensions are indicated: 5, 14, 24, and 5. The screws are labeled M20-k1.8.8 FIS A x4.



Obiekt:	ROZBUDOWA I MODERNIZACJA BUDYNKU ŚWIETLICY				
Lokalizacja:	SIKORY gm. BIELANY działka nr ewid. 101/1				
Nazwa rysunku:	KRATOWNICA K1				
Faza opracowania:	PROJEKT TECHNICZNY				
Branża:	KONSTRUKCJA				
Projektant:	nr upr.	Podpis:	Sprawdzający:	nr upr.	Podpis:
mgr inż. Piotr Krysiński	MAZ/0080/P00K/10 konstrukcyjno – budowlane				
Skala: 1: 20	Data: 04.2025	Numer rysunku:	K.PT.04		
PROJEKT chroniony prawem autorskim – zgodnie z Ustawą o Prawie Autorskim i prawach pokrewnych Dz.U.24.poz.83 z dn.4.02.1994r. Powielanie całości lub fragmentów bez zgody autora projektu – ZABRONIONE					